

## LL-PP/FO/WM2-24SCSX-E

— Wall mounting fiber optic patch panel, 24x SCSX, splicing device (optional), unloaded —

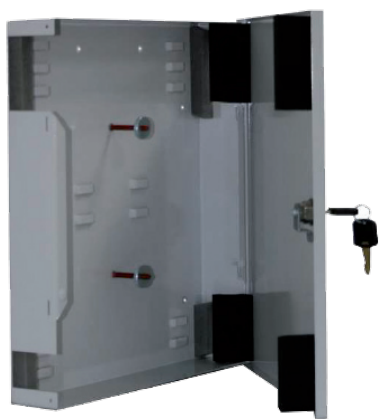
### Lockable front door

Coloring: RAL 7035 (light grey), other colors available on request

#### APPLICATION

Developed to represent the medium and most cost-effective solution of Fumo's range of wall mounting fiber optic patch panel, featuring changeable adapter plates and internal fiber management. The standard configuration includes one front plate with 24 outlets SC-simplex footprint and two plastic cable/fiber organizer. Splice trays, splice holders and splice protector's choice-wise heat-shrink or crimp variation on request. Benefits: direct wall fixation, fast and simple installation, little requirement of manpower, multiple cable access points for maximum versatility, cost-effective.

#### PATCHPANEL WALL MOUNTING



#### ACCESSORIES (OPTIONAL)

- FOR SPLICING DEVICES -



- Stackable splice tray 2/24 splices
- Splice comb (holder) 6/12 splices
- Splice protectors heat shrink/crimp

#### TECHNICAL SPECIFICATION

Panel	: standard panel kit 24 x outlets SCSX footprint
Adapters	: SCSX, LCDX, E2000
Capacity	: up to 48 fibers
Type	: wall mounting
Material of panel	: grade steel
Thickness of wall's	: 1,20mm (nominal)
Dimension	: 285mm x 325mm x 55mm (W x D x H)
Door lock	: key lock
Cable entry	: 2x exit way with insulation
Coating	: powder coating
Standard colors	: RAL 7035 - light grey  (other colors available on request)
Colors of numbering	: black  (other colors available on request)
Material of splice tray	: plastic compound
Material of splice holder	: plastic compound

#### FEATURES

- Housing with lockable swivel lid
- Two openings with dust-tight strips for incoming and outgoing cables, for fastening with cable ties
- Holders for max. 8 splice cassettes or 4 splice cassettes plus one adapter plate
- Paint finish: RAL 7035 (light grey)

#### PACKAGING

- High density cardboard.
- Corners are supported with Styrapor-protection.

© Fumo2013. All Rights Reserved. – All values in this data sheet are nominal.

The information contained within this document must not be copied, reprinted or reproduced in any form, either wholly or in part, without the written consent of Fumo. The information is believed correct at the time of issue. Fumo reserves the right to amend this specification without notice. Specification is not contractually valid unless specifically authorized by Fumo.

Rev. 11/2013



Fumo Communications  
FUMO COMMUNICATIONS

